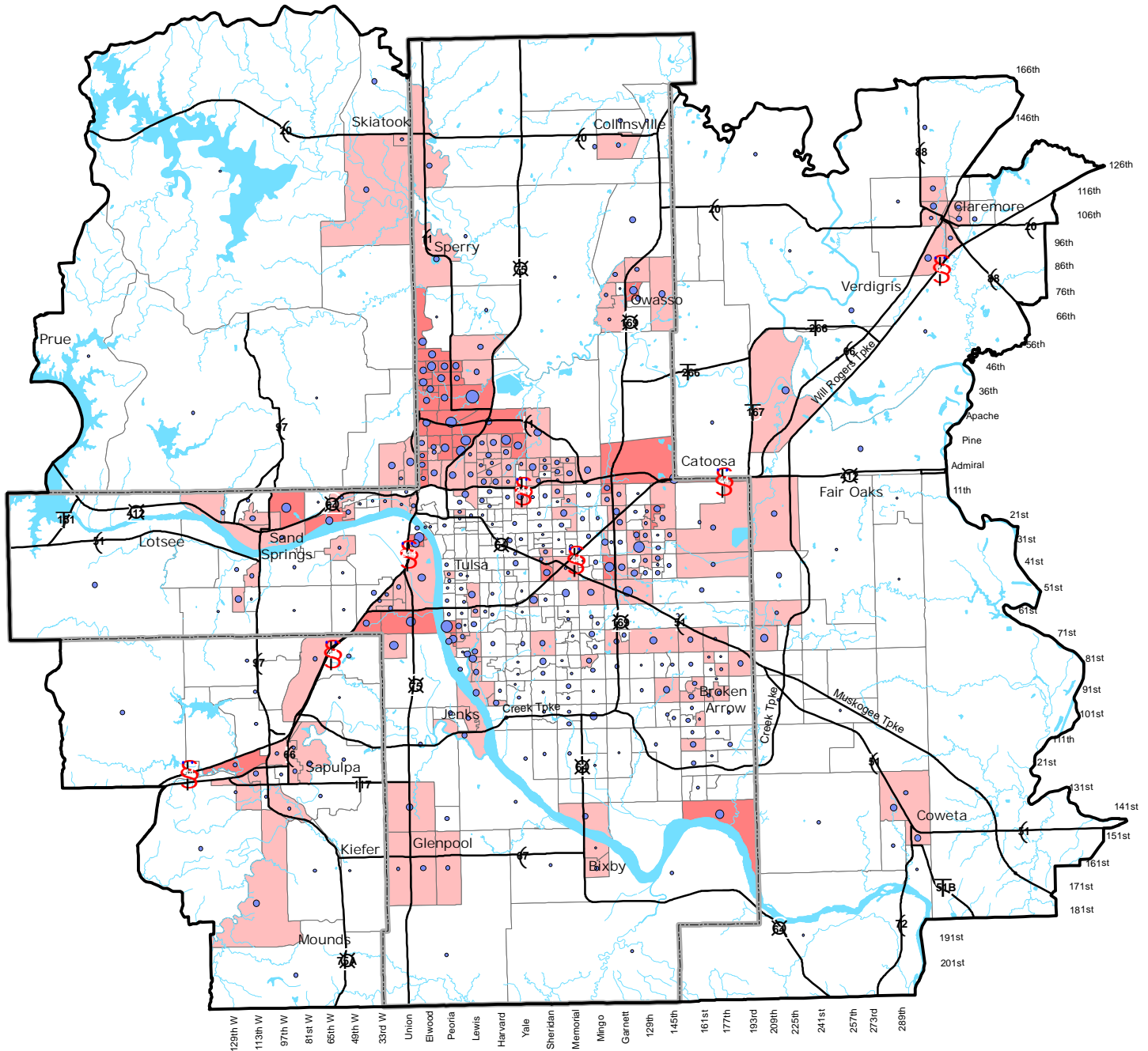


Concentraciones de Madres Solteras con Niños menor de 18 Años de Edad Área de Administración de Transporte



Legend

- TMA Boundary
- Tulsa County Boundary

TMA Female-Single Headed Households with Children <18 Population Standard Deviation

- Less than 1.00
- 1.00 to 1.99
- Greater than 2.00

Female-Single Headed Households with Children <18 by block group

Total Number

- 10
- 50
- 100

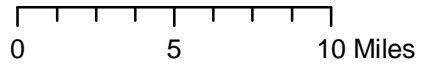
Other Symbols:

- Highways
- Streams
- Waterbodies

Total TMA Households = 278,763

TMA Female-Single Headed Households with children < 18 = 23, 508

Percent Female-Single Headed Households with children < 18 within the TMA = 8.43%



**Block groups of 20 or more Female-Single Headed Households with children <18 are represented on the map*

Standard deviation is a comparison of the percent of Female-Single Headed Households with children <18 population for that block group to the same percentage for the entire TMA. The higher the number the greater the concentration of the Female-Single Headed Households with children <18 population.

Map prepared by INCOG, 7/19/06, source - 2000 Census Data SF-1 by block group