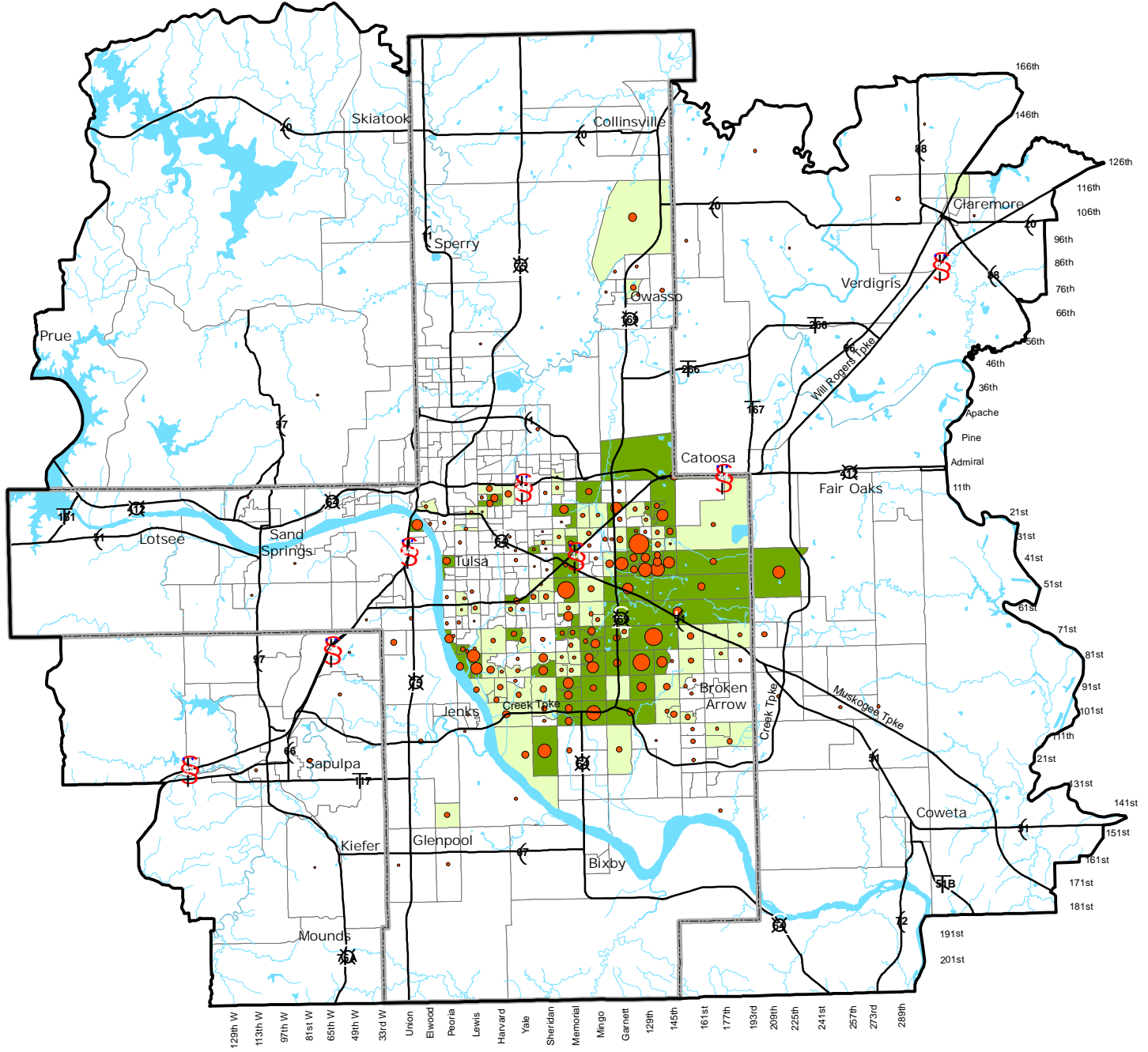


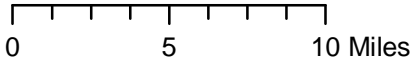
Concentraciones de Asiáticos dentro del Área de Administración de Transporte



Legend

| | | |
|--|-----------------------|----------------------------------|
| | TMA Boundary | # Asians in block groups* |
| | Tulsa County Boundary | Total Number |
| TMA Asian Population Standard Deviation | | • 10 |
| | Less than 1.00 | • 50 |
| | 1.00 to 1.99 | • 100 |
| | Greater than 2.00 | — Highways |
| | | |
| | | |

Total TMA Population = 705,994
 TMA Asian Population = 9,708
 Percent Asian within TMA = 1.4%



*Block groups of 10 or more Asians are represented on the map

Standard deviation is a comparison of the percent of Asian population for that block group to the same percentage for the entire TMA. The higher the number the greater the concentration of the Asian population.

Map prepared by INCOG, 7/19/06, source - 2000 Census Data SF-1 by block group