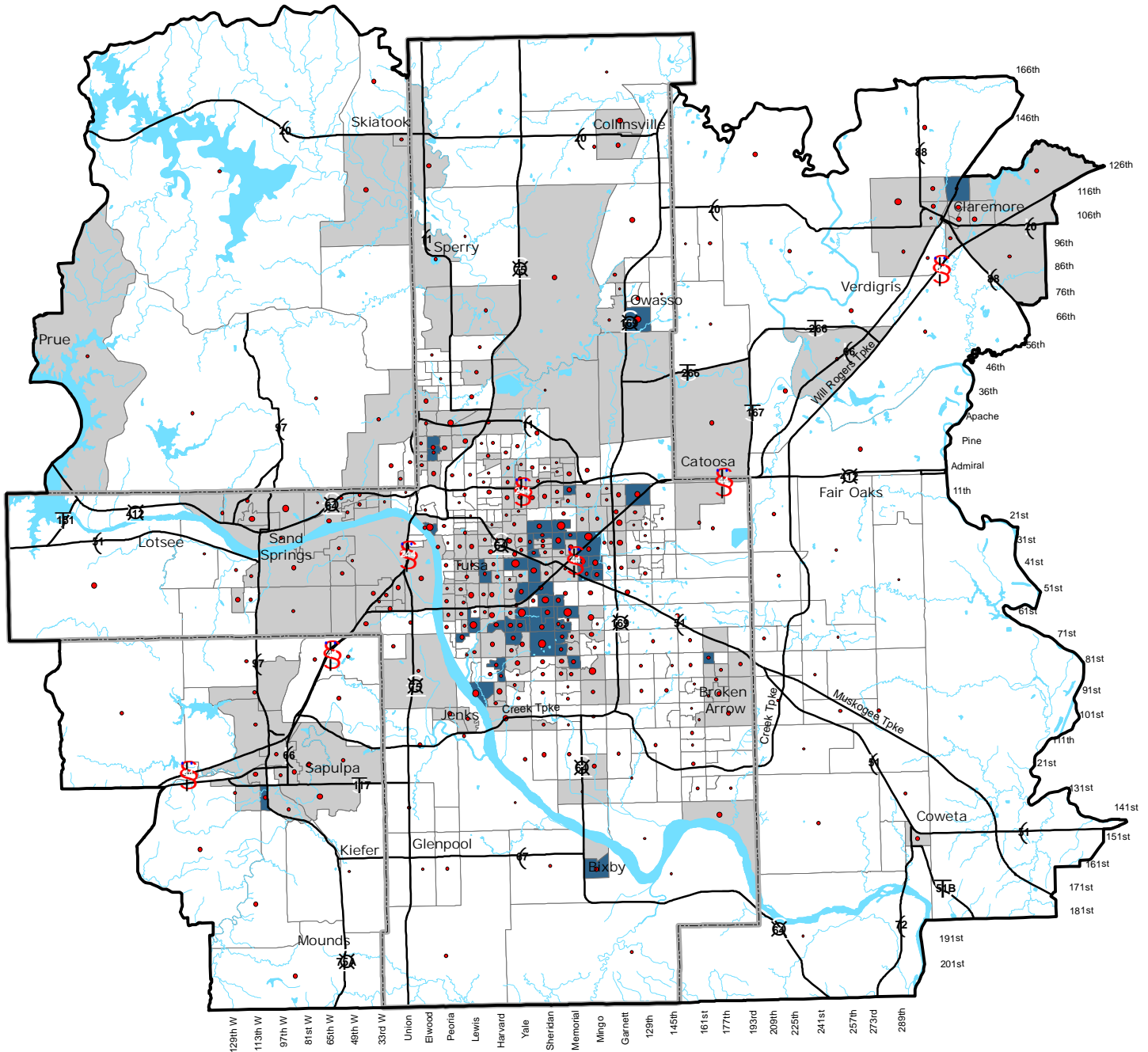


Concentraciones de Población de 65 Años de Edad o Más dentro del Área de Administración de Transporte



Legend

TMA Boundary

Tulsa County Boundary

TMA Population 65 Years & Older

Standard Deviation

Less than 1.00

1.00 to 1.99

Greater than 2.00

Population 65 Years & Older by block group*

Total Number

100

500

1,000

Highways

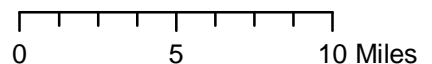
Streams

Waterbodies

Total TMA Population = 705,994

TMA Population 65 years & older = 81,922

Percent Population 65 years & older within the TMA = 11.6%



*Block groups of 100 or more population 65 years & older are represented on the map

Standard deviation is a comparison of the percent of population 65 years & older for that block group to the same percentage for the entire TMA. The higher the number the greater the concentration of the population 65 years & older.

Map prepared by INCOG, 7/19/06, source - 2000 Census Data SF-1 by block group