
INCOG EDD

Annual Performance Report 2011

Indian Nations Council of
Governments Economic
Development District



February 2012

www.incog.org

INTRODUCTION

Indian Nations Council of Governments (INCOG) worked with regional partners to establish a Comprehensive Economic Development Strategy (CEDS) for Creek, Osage and Tulsa Counties, which was adopted in 2008. INCOG receives an annual planning grant from the Economic Development Administration (EDA) to coordinate and implement eligible economic development activities for the cities, towns and counties within the designated area. Oklahoma is a member of the five-state region covered by the EDA regional office in Austin, Texas.

The 2008 CEDS Action Plan identified key goals and activities addressing six broad categories: I) Regional Vitality, II) Regional Infrastructure Investments, III) Workforce Development & Talent Attraction, IV) Quality Jobs, V) Targeted Industry Clusters, and VI) Innovation Economy. Goals and objectives were further defined as specific initiatives within the planning document. Since its inception, various INCOG staff managed the CEDS programs and projects.

In April 2011 a credentialed economic development planner joined the INCOG staff. The position is funded in part by the Planning Grant to manage and service the CEDS program of work throughout the three-county region. Staff attends EDA sponsored conferences, training and workshops as well as state and regional economic development meetings on a regular basis to understand the challenges and opportunities of the regional and national economy and improve knowledge of best practices and trends. The ED planner also participated with EDA staff as a peer reviewer of ED District programs in south Texas during 2011.

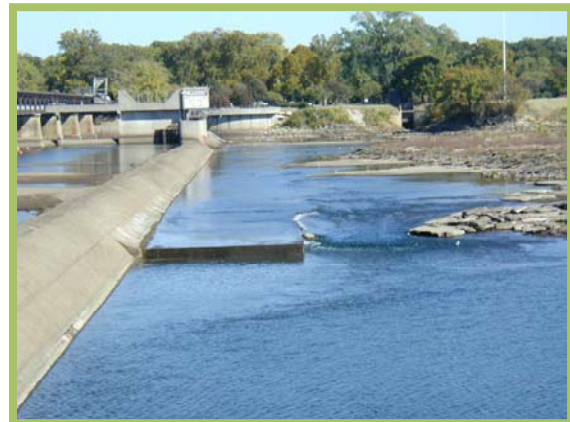
ECONOMIC DEVELOPMENT ACTIVITIES

1. In August 2009 EDA awarded INCOG funding for the Long-Term-Industry Plan in the amount of \$350,000 for a period of 24 months. Various planning and programming activities occurred during the subsequent 12 to 18 months conducting research to address a regional innovation strategy. Ultimately, we determined a partnership with the Oklahoma non-profit i2E (Innovation to Enterprise) would provide our area the ability to implement the goals of this grant award. In June 2011 INCOG requested a 12-month extension of the original contract to August 2012 and received approval from EDA to amend the original grant award with the addition of i2E as co-grantee. Originally founded in 1997, i2E was created to respond to an Oklahoma Center for the Advancement of Science and Technology (OCAST) initiative. Since 1998, i2E has assisted hundreds of entrepreneurs, companies, inventors and researchers turn their technological innovations into high growth business opportunities for Oklahoma.

Under this joint agreement, i2E will: identify, attract and retain talent within the IT/Software cluster and establish programs to provide entrepreneurs access to mentors, potential board members and experienced executives that improve their odds of success. The firm will provide development training services, local networking and venture advisory

services with the goal of successful technology commercialization. i2E offers business model analysis, business plan preparation, market analysis and investment package preparation. A current business baseline was established as a starting point for a monitoring report, including metrics, which will be provided by the end of this fiscal year detailing the number of clients served, new jobs created, annual revenues and average annual wage. Reimbursement for the program for i2E is capped at \$280,000. The EDA grant expires August 2012 and there is no provision for a second extension. *This project responds to CEDS categories III, IV, V and VI.*

2. In 2008 EDA awarded Tulsa County \$500,000 in matching funds for preliminary design of proposed Arkansas River Corridor projects. A scope of services was developed to best meet the goals of the EDA grant, to prepare as much technical information as possible with the funding available to ultimately assemble a complete Section 404 permit application as required by the Clean Water Act and the U.S. Army Corps of Engineers' (USACE) regulations to implement the proposed Vision 2025 projects. The consultant team of CH2M HILL was selected to perform this work. The scope of the grant presented a general outline containing five major study elements: 1) Review existing information and materials; 2) Perform related studies; 3) Prepare preliminary designs of improvement requirements and alternatives; 4) Prepare Section 404 permit application and submit to the Corps of Engineers; and 5) Provide continued liaison with the Corps and other pertinent resource agencies throughout the process. The studies included sediment evaluation, hydraulic and hydrology modeling and evaluation of proposed improvements and river system as well as habitat restoration or improvement requirements and alternatives.



Meetings were held with the consultant team, local sponsor representatives and local, state and federal agencies to inform, coordinate, and solicit information, input and comments. These meetings included representatives from the Corps of Engineers, US Fish and Wildlife Service, OK Department

of Wildlife Conservation, ODEQ, State Archeologists, USGS, NRCS, City of Sand Springs, City of Tulsa, City of Jenks, INCOG, River Parks Authority, levee districts and many more. Numerous public meetings were held to inform the public about project alternatives and progress and to obtain their input and comments. The final report was delivered in March 2011. With the completion of these activities and reports the project has advanced significantly in addressing the regulatory requirements to prepare for the permitting process. Data and study gaps were identified that will be the focus of work to be performed in future study efforts, yet to be funded. All work will be utilized in the project design and regulatory permitting process therefore future duplication of efforts will be avoided based on close coordination of the consultant team, local stakeholders, the USACE and other resource agencies. *This project responds to CEDS category I, Regional Vitality.*

3. In April 2010 EDA awarded the Osage County Industrial Authority \$750,000 in matching funds for construction of a 20,000sf multi-bay business incubator building in Pawhuska. The



grant is part of a \$2 million funding package for a project made possible by a federal disaster declaration as a result of flooding in Osage County in June 2008. Additional funding sources include a \$500,000 CDBG-EDIF grant from the Oklahoma Department of Commerce, \$500,000 from the Osage Nation and \$243,000 in land and matching funds from OCIA. The City of Pawhuska is providing approximately \$50,000 in-kind services, including water and sewer to the site. Also, Tri-County Technology

Center, based in Bartlesville, will furnish and maintain the facility. Once construction is completed Tri-County will also provide a full-time staff position as well as establish classes for students and prospects. Business incubators are designed to accelerate the successful development of entrepreneurial companies through an array of business support resources and services. This historic partnership is a proud accomplishment for the region. Upon completion, March 2012, the project anticipates retaining four jobs and creating 75 new jobs. *This projects responds to CEDS categories III and IV.*

4. In June 2010 EDA awarded the Oklahoma Centennial Botanical Garden and the City of Tulsa \$1,000,000 to be used with matching funds in the design and construction of a water line to support the Garden facility. The Garden, which will include a research and education center, is being developed on land donated by a group of investors led by Tulsa businessmen Gentner Drummond and Tom Atherton. Sixty acres will be developed into gardens and features. One hundred acres of Cross Timbers ancient forest and prairie are being preserved for historical and ecological significance. The site is in southeastern Osage County and within the City of Tulsa fenceline.

The garden's Centennial Phase – a seven-acre lake, temporary visitor center, road and parking lot – were constructed with a state Centennial Commission grant. Now completed is the garden's first landscaping project: three hundred ornamental and shade trees, a lawn and walking path placed around the lake. A 1½ mile nature trail winds through the woodland and prairie. The garden is open to the public from April through October.

The Spears School of Business at Oklahoma State University has estimated the Garden will generate \$107 million annually for the Tulsa area economy and will employ nearly 300 people. The creators of the Garden's master plan forecast 300,000 visitors a year after construction is completed. The garden will have 15 major theme gardens, 60 specialty gardens, a 3,000-seat amphitheater, interfaith chapel, three-story observation tower, visitor center and extensive trails through the gardens and the conservation areas. The site also serves as a living laboratory where researchers and educators are expanding the knowledge

and understanding of Oklahoma's resources. Educational partners are Oklahoma State University, Tulsa Community College, Tulsa Technology Center, University of Oklahoma, and the University of Tulsa. *This project responds to CEDS categories II and V.*

5. In September 2011 EDA awarded the Oklahoma Innovation Institute \$800,000 in matching funds for the Tulsa Community Supercomputer. The institute's flagship asset, a dense memory supercomputer will provide the only computing capabilities of its kind in the region. The Tulsa Community Supercomputer puts this area on the map with the most competitive technology clusters in the United States. The supercomputer will leverage universities, colleges, research centers, enterprise and small business to address computational needs across multiple industries and disciplines. In addition, the Oklahoma Innovation Institute represents a historic, collaborative, multidisciplinary research partnership formed by the University of Tulsa, Oklahoma University-Tulsa, Oklahoma State University-Tulsa, and Tulsa Community College. Through this partnership, the programs and services developed will lead to the creation of high impact jobs for the Tulsa region in the technology and scientific sectors. The Supercomputer will be installed at Tulsa's City Hall at One Technology Center and the federal funds will be used for upgrading the electrical and mechanical infrastructure to support the system. The project is part of a total \$6.25 million package of the Institute's development. *This project responds to CEDS categories II, IV, V and VI.*



6. In September 2011 EDA awarded the Tulsa Economic Development Corporation \$600,000 to help build a permanent home for the organization and for The Forge, a business development center established by Tulsa's Young Professionals for start-ups and existing small businesses in the region. The investment will be used to acquire and renovate an existing building in downtown Tulsa with the inclusion of TEDC matching funds, as well as purchase critical equipment necessary to operate the facility. TEDC will also offer financing solutions, educational resources, technical assistance and affordable space. TEDC estimates 62 jobs will be created in the first year after completion along with the long term economic benefit of retaining young professionals in the region. *This project responds to CEDS category IV, Quality Jobs.*

For questions or additional information about INCOG or its economic development programs, please contact jminer@incog.org, call 918.584.7526 or visit our website www.incog.org